



## Picture This - Adjectives - Comparative and Superlative



This is a box.

### Big | Small



This is a **small** box.

This is a **big** box.



### Bigger / Smaller | Biggest / Smallest



The blue box is **bigger** than the green box.



The blue box is **smaller** than the red box.



The green box is **smaller** than the red box and the blue box.

The red box is **bigger** than the blue box and the green box.

The green box is **the smallest** box.

The red box is **the biggest** box.

### Higher / Lower | Highest / Lowest

Mount Snowdon



Mount Fuji is

higher than Mount Snowdon.

Mount Fuji

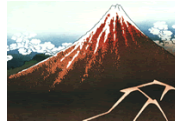
Mount Fuji is

higher than Mount Everest Snowdon, but



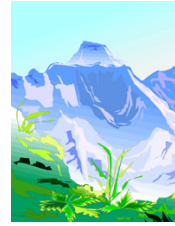


1,085 metres



3,776 metres

lower than Mount Everest.



8,848 metres

Mount Everest is the highest mountain.

Mount Snowdon is the lowest mountain.

## Longer / Shorter | Longest / Shortest

River Danube



2,850 (km)

The river Amazon is longer than the river Danube.

River Amazon



6,516 (km)

The river Amazon is longer than the river Danube, but shorter than the river Nile.

River Nile



6,695 (km)

The river Nile is the longest river.

The river Danube is the shortest river.

## Cheaper / More (Less) Expensive | Cheapest / Most (Least) Expensive

John's car was less

John's car cost expensive

£15,000



than Jane's car. It's cheaper than Jane's car.

Jane's car cost £25,000



Jane's car is more

expensive

than

John's car, but less expensive than Bill's car.

Bill's car cost £55,000



Bill's car is the most expensive car.

John's car is the least expensive car. It's the





cheapest car.

- See more at:

<http://www.learnenglish.de/Pictureelt/adjectivesinpictures.html#sthash.OLmxSdhW.dpuf>



# مرحبا بكم علي منصة مراجعة



**COLLEGE.MOURAJAA.COM**



**NEWS.MOURAJAA.COM**

