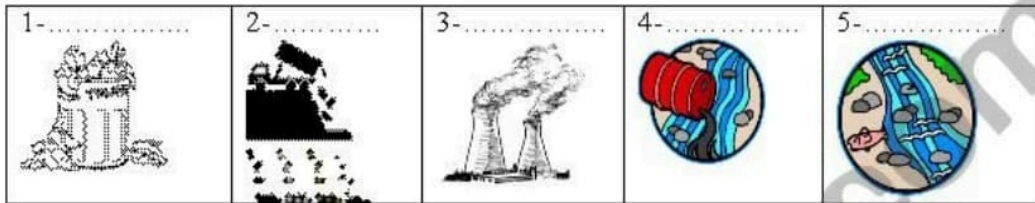




Pollution

Task 1:

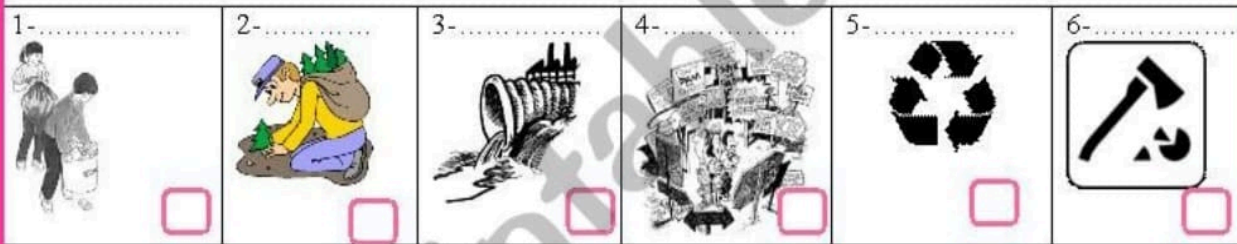
Step 1: Label the pictures with words from the list below: death of animals - landfill - rubbish - fumes - oil spills



Look at the pictures and answer these question : What causes pollution in the pictures above?

Step 2: Label the following pictures with words from the list below:

sewage - planting trees - collecting litter - campaigning against pollution - logging - recycling



How can we improve our environment? Put a tick next to the suitable pictures.

The text:

Pollution can be described as something that changes the environment in a negative way. From individuals to big factories, everyone has an impact on our environment.

Pollution can be big or small, visible or invisible. It can be large oil spills that ruin the coast to little drips of oil washed into the water when people wash their boats. It can be visible like smoky fires in a back yard to tiny particles that can only be seen through a microscope. Pollution can be in the land, sea, air and water.

One of the best ways to know if the environment around you is polluted is to use your senses. You can usually see, smell or taste if something is not pure any more - if it has been polluted. Often pollution is waste or rubbish that is discharged or discarded by people. Waste does not go away. It is simply moved to another place - into a rubbish tip or landfill or poured down a drain. Recycling is a good way to keep waste to a minimum.

<http://www.nrc.govt.nz/> (adapted)





1) Read the text and answer these questions.

A description of pollution and people contribution to it.

2) The text is about: Pollution and its effect on the ozone layer

Land and water pollution

3) These statements are false. Correct them.

Pollution has no effect on the environment. (Paragraph 1)

.....
Only big factories have an effect on our environment. (Paragraph 1)

.....
Pollution can always be seen. (Paragraph 2)

.....
4) Tick the correct alternative. (paragraph 2)

Aspects of pollution	visible	invisible	cause
Oil spills			
Smoky fires			
particles			

5) Answer the following questions:

Which senses can you use to know if your environment is polluted?

.....
Where do people put the waste that they discharge?

.....
Is moving rubbish to landfills the right way to deal with pollution?

.....





6) What do "who", "which" and "that" replace in the text?

Now, let's complete the rule:

Who, Which and That are.....
We use **Which** to refer to.....
We use **Who** to refer to.....
We use **That** to refer to.....

Writing: You noticed that your town is polluted so you decided to do a campaign against pollution with some of your friends. You are going to make people aware of the pollution around them and some solutions.

.....
.....
.....
.....
.....
.....
.....
.....
.....

